

成品尺寸:70*180mm

纸材:80g双胶纸

装订:风琴页

一面中文一面英文,英文在首页

封面

Page 1

180mm

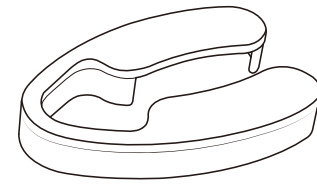


ADVANCE ENTRY AND THE WINE OPENER.

We at Advanced Entry would like to thank our valued clients for entrusting us with the safety and security of their visitors, residents, and staff! We hope this gift properly exemplifies how honored we are to be your choice in visitor management.

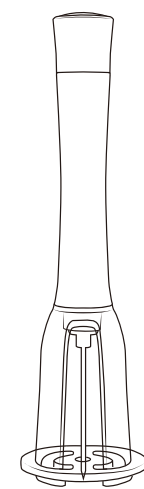
Your new Air Pressure Pump Wine Opener Set includes everything required for efficient and effortless wine service, just as our Advanced Entry kiosks come equipped with everything you need for smooth and seamless check-in. Things can always get done the old-fashioned way, like with your handy corkscrew bottle opener. Yet our goal at Advanced Entry is to streamline and modernize the way you manage your facility's comings and goings. Say goodbye to the era of hefty log books and overworked check-in personnel. Welcome a fully automated system that meticulously records and organizes data, vets and identifies each one of your visitors, and creates an amalgamated communication network including everyone in your facility.

In your new wine opener set, here's what you'll find:



FOIL CUTTER

Made of stainless steel with a razor-sharp edge, this piece is your first step to introducing your wine of choice to your table. Rest assured that this piece won't rust, and will maintain its sleek blades. Our cutting-edge technology is also far from the rusty ways of the past. We're working each day to introduce a modern solution to a long-time issue of safety and organization for senior living facilities.



AIR PRESSURE PUMP BOTTLE OPENER

The main event of this set utilizes an ingenious design of air pressure manipulation to create a safer and easier way to uncork wine. And for the wine aficionados out there who'd like to keep the seals to their favorite bottles - this device will preserve the cork perfectly. Similarly, our kiosks and system innovate the way visitor management is executed at your facility. Contemporary issues such as the Covid-19 pandemic, with all of its unexpected twists, require an avant-garde method to confront their threats to the health and safety of your residents. We at Advanced Entry are here to offer state-of-the-art solutions to these problems for your organization.



AERATOR POURER

Pouring the wine is an essential part of wine service. Using this simple, fan-shaped device atop your bottle creates a nice, even pour. This subtle touch is the step that gives your table a sophisticated flair. So too, our kiosks stationed at your entrances will demonstrate an advanced, safety-minded facility, putting your organization a cut above the rest.



VACUUM STOPPER

Before going and trying to jam the detached cork back into your bottle, take a look at the final piece of this set. This vacuum stopper perches itself into the bottle's neck. With a simple push-and-pull maneuver, the remaining liquid will be perfectly sealed off. This provides a clean and neat way to preserve your choicest wines. Likewise, Advanced Entry's aim has always been for senior living homes to access a neat and functional check-in process. While you focus on what makes your organization great, our system is always at work in the background, efficiently storing data and securing the entrances and exits to your facility.



1449 37th St Suite #501, Brooklyn, NY 11218
(888) 883-6879
info@advancedentry.com
Advancedentry.com

封底

Page 6

We hope this small token of appreciation reminds you of the ultimate goal of our product - a safe and controlled environment for your personnel and residents. We know that security is your top priority, making it our guarantee.

70mm

Back

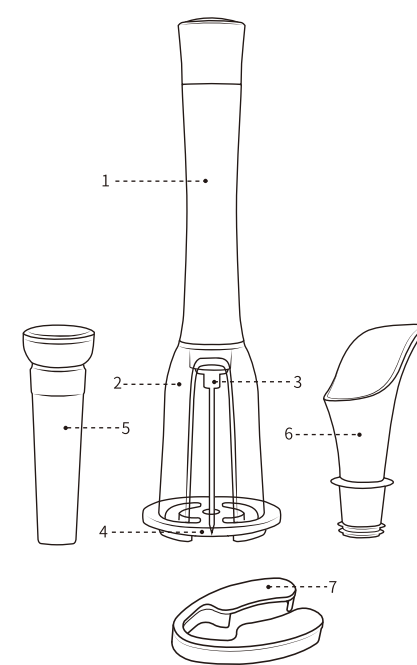
Please enjoy your new Air Pressure Pump Wine Opener Set!

BEFORE USING FOR THE FIRST TIME:

To ensure your safety and maintain the high quality of this product, we recommend that you read and follow the instructions carefully.

- Do not immerse the appliance in water or any other liquid to avoid physical injury or damage to this product.
- Do not touch the needle while using this product. Store this product out of children's reach. Children are prohibited from using this product.
- Do not dismantle this product by yourself; otherwise, the warranty will be invalidated.
- Do not force this product onto any wine bottle.
- Do not use this product for any other purpose.
- Do not turn the wine bottle upside down while using this product.

PRODUCT DESCRIPTION



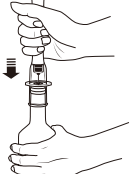
1. Handle
2. Protection Cover
3. Needle
4. Cork Release Slider
5. Manual vacuum pump sealer
6. Wine pourer
7. Foil cutter

HOW TO USE THE AIR PUMP WINE OPENER:

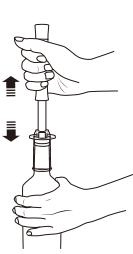
Put the foil cutter onto the bottlenecks, hold tightly with fingers, turn the bottle for more than one rotation, and cut off the foil seal.



Remove the foil seal, and penetrate the needle vertically through the center of the cork. Make sure the needle tip comes out from the other end of the cork.



Hold the bottle firmly with one hand and grasp the opener handle with the other hand. Push and pull the handle to pump air into the bottle until the cork is gradually pushed out of the bottlenecks (generally 5-10 pumps per bottle will work).



Push the cork release slider to release the cork from the needle.



IMPORTANT REMINDERS

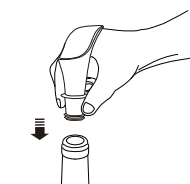
- No risk of bottle explosion: The product utilizes a unique safety design to effectively control the inside air pressure to avoid any risk of explosion.
- This air pump wine opener is designed to work best for a full wine bottle with an intact cork. As cork specifications including length, diameter, material, and density are varied, the actual operating performance may differ.
- If it becomes difficult to pump air into the bottle while the cork remains still, the air pump wine opener might not be compatible with the bottle being used. Please browse our other wine opener options.
- This product is suitable for corks with a height of 44mm.
- This product is suitable for wine bottles with a bottlenecks diameter of not more than 35 mm.

ATTENTION

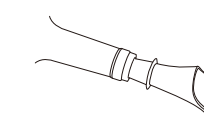
- Do not use this wine opener to open sparkling wine, or a bottle with a plastic cork.
- Push and pull the handle at equal speed and then slow down when the cork starts to move. Excessive force and speed might lower the air pumping efficiency.
- Stop using the product when the handle gets hot. Forcing it while heated may affect the product's performance.
- Stand on the side and grasp the bottle and handle firmly when using this product to avoid injury!
- Do not aim at the face or other body parts when using this product!

HOW TO USE THE AIR PUMP WINE OPENER:

- Insert the wine pourer into the bottlenecks.



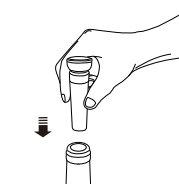
- Tilt the bottlenecks to pour from the wine pourer.



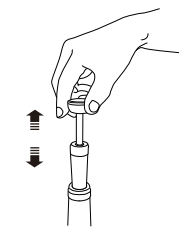
*This product is suitable for wine bottles with a bottlenecks inner diameter of between 18 mm and 19 mm.

HOW TO USE MANUAL VACUUM PUMP SEALER

- Firmly insert the sealer into the bottlenecks.



- Pull the handle up and down for about 15 times (for half full bottles).



- Store the bottle in a wine cabinet or refrigerator for better preserving effects. It is recommended to finish in 7 days.

*This product is suitable for wine bottles with a bottlenecks inner diameter of between 17.5 mm and 20 mm.